



# MARYLAND SEFEL PYRAMID MODEL Newsletter

September 2020

## WHAT'S NEW?

### LOCAL SCHOOL RE-OPENINGS



#### Maryland Local School System Reopening Plans

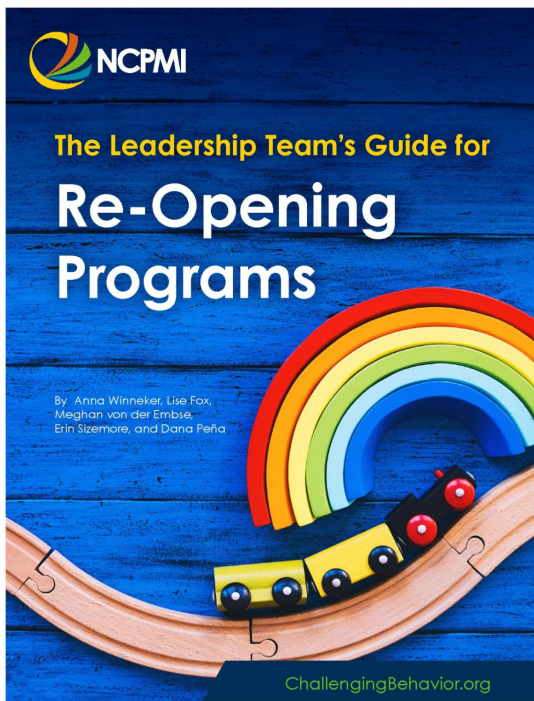
Fall 2020 (As of August 24, 2020) 2020-  
2021 Public Schools Openings & Closings  
Dates

[Read more](https://marylandpublicschools.org)  
marylandpublicschools.org

### RE-OPENING GUIDANCE

#### "The Leadership Team's Guide for Re-Opening Programs"

Early childhood programs are re-opening after closure due to the pandemic or changing procedures in response to health and safety guidance. We developed this guide to provide information on how programs can use Pyramid Model strategies to provide



predictable and nurturing environments that are supportive of children, teachers, and families.

Available from the NCPMI resource library:  
<https://challengingbehavior.org/resources>

Available from the NCPMI Emergency Page, Re-Opening Early Childhood Programs accordion:  
<https://challengingbehavior.org/emergency/index.html#reopen>



## Back-to-School Resources for Families and Educators

### Back to School Resources for Families and Educators

For families and educators alike, the transition into this school year comes with new challenges due to the coronavirus crisis. No matter your situation, we're here with practical tools and expert advice to help you make the best of going back to ...

[Read more](https://childmind.org)  
[childmind.org](https://childmind.org)

**CHILD CARE CENTER RE-OPENINGS**



## 2020 Roundtable Discussions - Child Care Aware of America

The COVID-19 pandemic has exposed the cracks in the U.S. child care system, and the added burden of the public health crisis threatens to break the system entirely. Providers who have remained open or are starting to reopen are facing a nearly...

[Read more](#)

[usachildcareaware.site-ym.com](https://usachildcareaware.site-ym.com)



### Division of Early Childhood

The Child Care Data Dashboard is intended to provide information on Maryland's child care programs during Coronavirus Disease 2019 (COVID-19) pandemic.

[Read more](#)

[earlychildhood.marylandpubl...](https://earlychildhood.marylandpubl...)

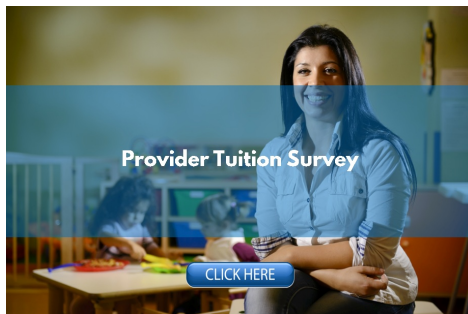


### Division of Early Childhood

Under Maryland law, a child care center is run by an individual, an agency, or an organization. It offers child care services for part or all of any day, at least twice a week. Most child care centers are regulated under COMAR 13A.16 ("Licensed...)

[Read more](#)

[earlychildhood.marylandpubl...](https://earlychildhood.marylandpubl...)



### Child Care Scholarship Program

The Child Care Scholarship (CCS) (formerly known as Child Care Subsidy) Program provides financial assistance with child care costs to eligible working families in Maryland. The program is managed



### The Family Child Care Provider Direct Grant Program

The Family Child Care Provider Direct Grant Fund Program exists to help registered family child care providers offset some of the costs of opening their child

through a centralized vendor -- Child Care...

[Read more](#)  
earlychildhood.marylandpubl...

care programs. Eligibility is based upon certain income levels and family size. An...

[Read more](#)  
earlychildhood.marylandpubl...

## TRAINING AND COACHING ACTIVITIES

After a brief pause in SEFEL Pyramid Model training with the shift to tele-work during COVID-19, virtual training is back up and has been booming over the summer. Throughout the summer, virtual trainings in the Pyramid Model have occurred in Montgomery, Queen Anne's, Prince George's, Talbot, Frederick and Washington Counties. Way to go Pyramid Model trainers.

Coaching, an important part of Pyramid Model implementation, is scheduled to start in the fall in many counties, including Frederick and Harford counties.

If you are a **Maryland State Approved Pyramid Model Trainer**, please check out the recording of a webinar delivered at the beginning of May on how to make your Pyramid Model trainings virtual (located under the resources tab of the [Trainers Corner](#)).

**\*\*Help us tell our state story! Register for the state Outcomes Monitoring System (OMS) and start entering your training and coaching data today.**

### SEFEL OMS

SEFEL OMS

ABOUT SEFEL REQUEST ACCESS LOGIN

\*Required

Email (Username)\*:

Password\*:

Re-type Password\*:

First Name\*:

Last Name\*:

Gender\*: ☐ Male ☐ Female

Race/Ethnicity\*:   
Asian  
Black or African American  
Native Hawaiian/Other Pacific Islander  
White  
Hispanic or Latino

Hold Ctrl/Cmd or Shift to select multiple

Age Range\*: ☐ <21 ☐ 21-30 ☐ 31-40 ☐ 41-50 ☐ 51-60 ☐ >60 ☐ Prefer not to disclose

User Type\*:

Submit

## STATE LEADERSHIP TEAM

The State Leadership Team continued to meet during this month, with a focus on how to continue to support the work of addressing the needs of children's social and emotional health while they are out of classrooms. Additionally, significant conversation focused on the role of the PM to address and support the elevation of strategies to address equity and anti-racism in the classroom, following the protests against police brutality and racism.

[Read Minutes from the most recent State Leadership Team Meeting](#)





## Webinar: Transportation Should Support Students with...

As students in some areas return to in-person education, focusing on supporting students with special needs and disabilities remains a priority for transportation leaders. Over the past couple of months, several news headlines have focused on the ...

[Read more](#)  
stnonline.com



## Federal funding will reduce costs of Howard County's...

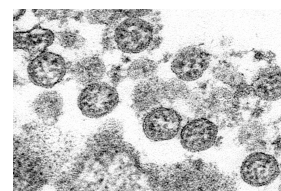
This story is part of "Parenting in a Pandemic," WTOP's continuing coverage of how parents are dealing with child care, schooling and more through the coronavirus pandemic. Howard County, Maryland, is launching a



## What's next?

There are three changes to the conditions used to determine whether local Head Start grantees have to compete for continued funding: In exchange, there will be two sets of thresholds: Quality Thresholds and Competitive Thresholds. Quality...

[Read more](#)  
view.email-nhsa.org



## Child-care center in Maryland with covid-19 case closes...

A child-care center in Prince George's County closed for two weeks following notice that a staff member tested positive for the novel coronavirus. Officials at Georgetown Hill Early School at Greenwood said in a letter to parents

program called RecZone to help...

[Read more](#)  
wtop.com

Tuesday that...

[Read more](#)  
www.washingtonpost.com

## PROFESSIONAL DEVELOPMENT



### National Center for Pyramid Model Innovations

A downloadable certificate is available for recorded webinars. To receive the certificate, you must fill out the evaluation survey. How to fill out the survey: Recording viewers: The URL link for the survey will be displayed at the end of the...

[Read more](#)  
challengingbehavior.cbcs.us...



### Trauma-Informed Care Webinar Series - Teachstone

In this webinar, Dr. Iheoma U. Iruka, the Chief Research Innovation Officer and Director of the Center for Early Education Research and Evaluation (CEERE) at HighScope Educational Research Foundation, will explore the reality of racism, white...

[Read more](#)  
teachstone.com

**Welcome**

**This webinar features two audio channels in English & Spanish -**

For those participating in **ENGLISH** and wish to receive interpretation from **SPANISH**.

Para aquellos participantes quienes gustan participar en **INGLÉS** y recibir interpretación del **ESPAÑOL**:

✓ Off  
English  
Spanish  
Mute Original Audio  
Interpretation

## Equity in IECMHC Webinar 4

Webinar 4: Culture, identity, history as sources of strength and resilience for Latino Children and Families. Recorded on July 30th, 2020

[Read more](#)  
vimeo.com



## Statewide Training Calendar | Maryland Family Network

Statewide Training Clearinghouse Calendar

[Read more](#)  
www.marylandfamilynetwork.org

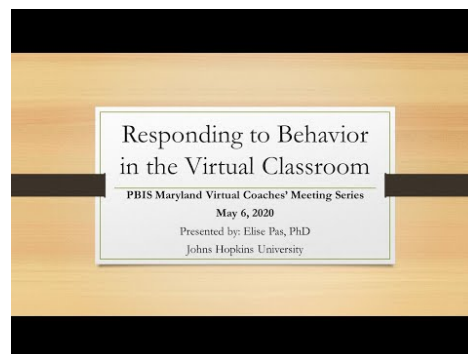
## STRATEGIES CORNER



### Podcast: How to Help Children Manage Rage | Conscious...

In this episode, Master Instructor Kim Jackson shares alternative strategies to help children understand and safely manage rage. She also explains how to differentiate between anger and rage, how to keep the other students in the classroom safe,...

[Read more](#)  
consciousdiscipline.com



### Responding to Behavior in the Virtual Classroom

Enjoy the videos and music you love, upload original content, and share it all with friends, family, and the world on YouTube.

[Read more](#)  
www.youtube.com

### Welcome! You are invited to join a meeting: Ready at...

On the wall of Fred Rogers' office hung a quote from his favorite book, The Little Prince. It read, "What is essential is invisible to the eye." As we embark on new learning and growing during uncertain times, what is essential about this time...

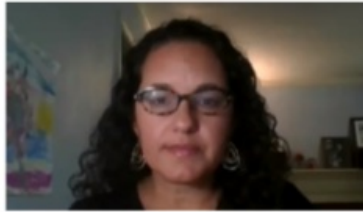
[Read more](#)  
zoom.us

## PIEC Vlog Series

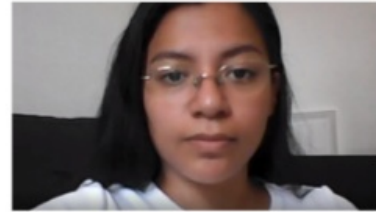
Have you seen the latest episodes of the PIEC Team vlog series? Check them out [here](#) and send us comments about what you are seeing in your community.



Episode 19 - August 20, 2020



Episode 18 - August 13, 2020



Episode 17 - August 6, 2020

## UPCOMING EVENTS

### THE 2020 MARYLAND FAMILY ENGAGEMENT SUMMIT WEBINAR SERIES



#### Welcome! You are invited to join a webinar: The 2020...

Join us Thursday, September 10, 2020 from 3 - 4:30 p.m. ET for the second session of the 2020 Maryland Family Engagement Summit Webinar Series. Mental Health and Trauma will feature Dr. Howard Stevenson, the Constance Clayton Professor of Urban...

[Read more](#)  
[maec-org.zoom.us](https://maec-org.zoom.us)

***The FREDLA Board of Directors and Staff cordially invite you to attend the virtual 2020 event Leadership into the Future.***

This exciting event will include a national perspective from SAMHSA, a renowned keynote speaker, awards and scholarships. If you want a preview of FREDLA 2021 and new resources for your use, [REGISTER TODAY](#) and reserve your seat!

*Click the ticket below for more details!*





## Register for the 2020 National Prenatal-to-3 Research to ...

2020 National Prenatal-to-3 Research to Policy Summit hosted by the Prenatal-to-3 Policy Impact Center at The University of Texas at Austin LBJ School of Public Affairs.

[Read more](https://info.childandfamilyresearch...)  
info.childandfamilyresearch...



**MHA**  
Mental Health America

**COVID-19, MENTAL HEALTH,  
AND THE NEED FOR EQUITY**  
SEPTEMBER 3-4, 2020

## MHA's Annual Conference: COVID-19, Mental Health, and...

Eventbrite - Mental Health America  
presents MHA's Annual Conference:  
COVID-19, Mental Health, and the Need  
for Equity - Thursday, September 3, 2020 |  
Friday, September 4, 2020 - Find event



## Where

The National Center for Pyramid Model  
Innovations (NCPMI) and the Pyramid  
Model Consortium (PMC) are pleased to  
bring you this unique and inspiring  
professional development experience.  
NTI's format is designed to provide an in-  
depth learning...

and ticket information.

[Read more](http://www.eventbrite.com)  
[www.eventbrite.com](http://www.eventbrite.com)

[Read more](http://nti.cbcs.usf.edu)  
[nti.cbcs.usf.edu](http://nti.cbcs.usf.edu)



### 2020 SEL Exchange | October 14-16, 2020

The 2020 SEL Exchange, hosted by the Collaborative for Academic, Social and Emotional Learning (CASEL), will be October 14-16, 2020 in the Chicagoland area.

[Read more](http://selexchange.casel.org)  
[selexchange.casel.org](http://selexchange.casel.org)



### Conference by the Sea 2020 | Maryland State Childcare...

In light of the current global climate, it is more important than ever for the child care community to connect with one another, strategize and share ideas, all in a safe, responsible way.

[Read more](http://mscca.org)  
[mscca.org](http://mscca.org)

Please email [the \*PIEC Team\*](mailto:thePIECTeam@case.org) to have any upcoming trainings or events you are hosting featured in the newsletter!

## Share Anything About Your Work With Us!



[Click here to reach us](#)

## SEFEL Pyramid Model in Maryland

[Visit our website](#)

Come follow us on social media where we share week-day posts surrounding positive social emotional learning.



Facebook:  
Maryland  
Pyramid  
Model



@MDpyramidmodel  
[www.instagram.com/mdpyrami](http://www.instagram.com/mdpyrami)

Instagram:



Twitter:  
@MDpyramid  
[www.twitter.com/mdpyramid](http://www.twitter.com/mdpyramid)

[www.facebook.com/MDPyramid  
Model](http://www.facebook.com/MDPyramidModel)

[dmodel](#)

[www.mdpyramidmodelsefel.org](http://www.mdpyramidmodelsefel.org)